

# ANTIMICROBIAL COATING SERVICE

GETTING YOU BACK TO WORK QUICKER & SAFER

- Consultations
- Surveys
- Specialist On-Site Application
- Microbe Testing

A photograph showing a person in a white lab coat sitting at a desk, working on a laptop. The person's hands are visible, typing on the keyboard. There are papers and a pen on the desk in front of them. The background is blurred, suggesting an office or laboratory setting.

**totaloffice**  
Totally possible

# HYGIENE, MICROBES & BACTERIA

---

Currently, we are even more aware of bacteria and microbes and our exposure to them on a daily basis. We also know these are spread through touch, and that personal hygiene and keeping our environments clean is key to keeping infection levels under control. But we do not notice everything we touch.

Over lockdown, the introduction and uptake of new technologies and practices in all walks of life has enabled people to adapt to the pandemic threat accordingly – working from home, home-schooling, and even returning to the workplace where new measures have been developed which instil confidence. Total Office is able to offer a full antibacterial and antimicrobial coating service to environments including workplaces, education, healthcare, leisure and many others.



## **ANTIVIRAL**

Against TGEV-Coronavirus (SARS-CoV model virus) and Influenza A.



## **ANTIBACTERIAL**

Broad antibacterial activity (including multi-resistant bacteria).



## **FUNGICIDAL**

Permanent fungicidal action.



## **FREE FROM SVHC**

Especially free from fluorine, PBT & vPvB-substances.



## **DERMATOLOGICALLY TESTED**

Rating of "excellent".



## **PREVENTS MOULD GROWTH & ODOURS**

Prevents mould growth on smooth & textured surfaces & microbial odours.



## **FACILITATES CLEANING**

By repelling liquid and dirt, whilst also preventing fingermarks.

# HOW CAN WE HELP YOU & YOUR CLIENTS?

---

We have a specialist team experienced in applying our coating safely and effectively.

Our COMPLETE ANTIMICROBIAL CONSULTANCY service provides:

- Expert advice on how best to protect your environment.
- An in-depth survey of the area or space to be protected.
- Correct assessment on the best application method of our coating depending on the surface type i.e. absorbent or non-absorbent.
- Thorough pre-application cleaning of surfaces.
- Thorough pre-application priming of surfaces.
- A team of specialist applicators who will screen off areas to be treated so the rest of your staff can keep working safely and undisturbed.
- Post-application testing is available to ensure surfaces are still providing protection.



# THE SCIENCE

Our product uses nanocoating technology, where a layer of silica sand ( $\text{SiO}_2$ ) forms a permanently bonded nanoscale layer of glass over the treated surface. The functionality of this technology has been facilitated by the introduction of an antimicrobial active ingredient which cross-links with the strong bond formed by the  $\text{SiO}_2$ . The ammonium chloride-based antimicrobial treatment constantly kills viruses, bacteria, moulds and fungi that come into contact with it. The microbe is physically killed on contact with the surface by puncturing the cell's outer wall and rendering it inactive.

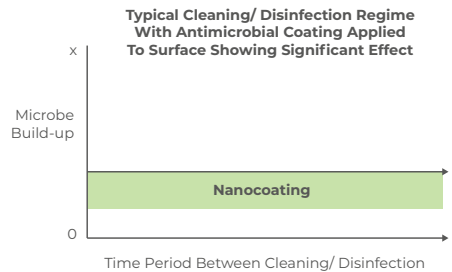
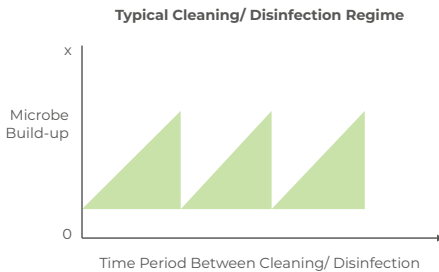


# WHY CLEANING IS NOT ENOUGH



By not using harsh chemicals this is also better for the environment.

Reduce microbial growth between disinfection and cleaning cycles. Without regular deep cleaning, surfaces can become breeding grounds for bacteria. Applying our antimicrobial coating to surfaces protects against the rapid build-up of bacteria and allows strict cleaning schedules to be relaxed, saving both time and money.



**Our coating offers a less costly option than regular cleaning and fogging, remaining active for many months - see fact sheet for more information.**

Results in laboratory tests have shown a reduction in CFUs up to **99.9%**

# APPLICATIONS

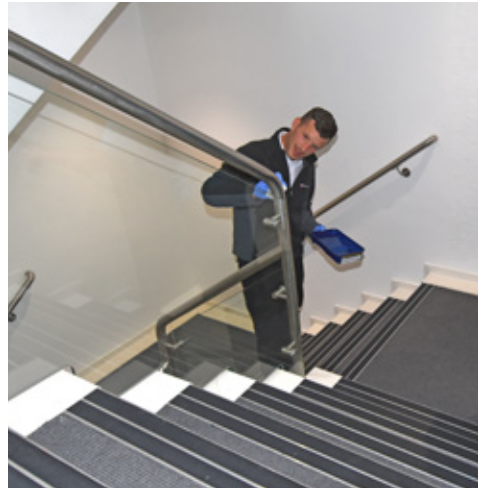
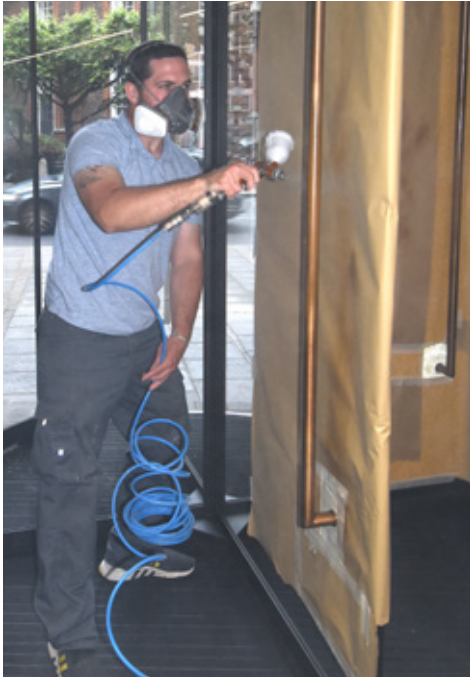
---

Our antimicrobial coating is suitable for use on a variety of surfaces and for any size of surface, whether that be a reception area desk or walls and doors. It can also be applied to your existing furniture and internal structures or to brand new items, providing an invisible layer of protection without discolouring or staining surfaces.

## OUR COATING OFFERS

- Antimicrobial protection achieved quickly, efficiently and with the least disruption possible by specialist, experienced teams.
- Defence by killing germs upon the first application, then continues to protect an environment by reducing the growth rate of bacteria.
- Assured protection against all known germs, including superbugs.
- A powerful and invisible long-term solution to halt the growth of bacteria.
- A less costly option than regular deep cleaning and fogging.





### SURFACES

- Wood
- Plastics
- Metals
- Glass
- Ceramics
- Stone
- Natural materials
- Composites

### FABRICS

- Natural & synthetic fabrics\*
- Woven & non-woven\*
- Leather & faux leather

\*For new products only. Please ask for details.

### APPLICATIONS

- Furniture
- Door handles
- Touch/push plates
- Touch screens
- Keyboards
- Lifts - handrails & buttons
- Staircase handrails
- Desks
- Tables
- Door entry buttons
- Toilet flush buttons/handles



# APPROVED BY REGULATORY BODIES

---



**TOUCH FREE  
Lockers Available**

**Including  
Office &  
Parcel  
Lockers**



Contact us for more information on our services and to request our detailed data sheet.

**Total Office Ltd**  
020 7536 2345  
sales@totaloffice.co.uk  
totaloffice.co.uk

**totaloffice**  
Totally possible