

# Are you suffering from back pain and discomfort? If so, then our DSE assessments are a must for you!

Workplace assessments for those suffering with musculoskeletal pain and discomfort can help you find ways to do your job in comfort and without barriers.

We have partnered with a UK-wide force of experienced assessors can deliver a range of **workstation assessments** depending on your goal - whether it's simply to meet all-important **display screen equipment (DSE) regulations**, to future-proof your office, or to take a closer, more detailed look at more complex cases. DSE assessments are carried out by trained DSE assessors, while more in-depth assessments are delivered by qualified health professionals.

Find ways to help employees do their jobs in comfort and without barriers, with our range of five key DSE assessments:

## Remote DSE Workstation Assessment £95

Receive helpful posture and set-up advice at your convenience with Remote DSE Workstation Assessment service. This is a convenient and cost-effective solution for any individual who has reported pain or discomfort that may be related to their workstation.

## Face to Face DSE Workstation Assessment £150

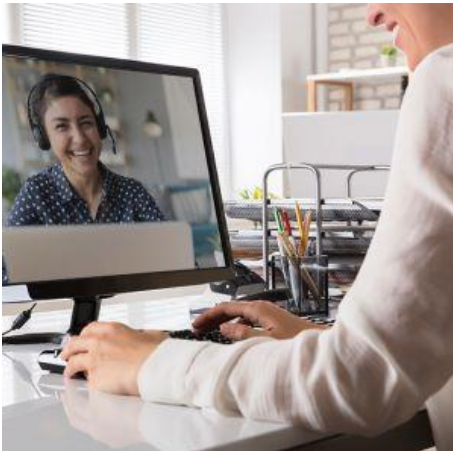
Get to the root of work-related pain in greater detail with our Face-to-Face DSE Workstation Assessment. This is a 45-minute one-to-one session designed to identify and help eliminate problems related to DSE activities. By 'problems', we mean anything that could be aggravating, contributing or even causing an employee to have discomfort whilst working with DSE.

## Chair Set-up Service

With our chair set-up service, we'll visit you to make any necessary adjustments so that the chair is as comfortable and ergonomically as possible for its new user.



Prices start  
from £49.95



Get in touch so we  
can help.



023 8063 8641  
sales@deosgroup.co.uk

## Specialist Computer Workstation Assessment £395

This face-to-face assessment deals with more complicated cases requiring deeper knowledge and experience to address the reported problems, generally musculoskeletal, affecting display screen equipment (DSE) work.

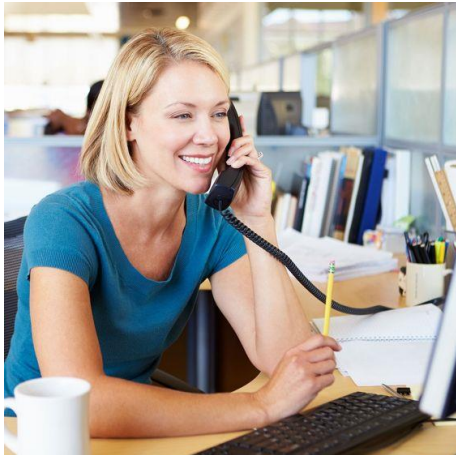
We review, and aim to improve, the workstation set up to help alleviate musculoskeletal discomfort, and issues reported, and recommend any further changes that may improve the comfort of the workstation for the person concerned.

### **Who completes these Specialist Computer Workstation assessments?**

These assessments will be carried out by a health professional with in-depth knowledge of musculoskeletal issues and ergonomics training, or an ergonomist with specific knowledge in workstation issues.

### **What happens during the Specialist Computer Workstation assessment?**

During the assessment the assessor will ask the user questions about issues they are experiencing whilst using their workstation, any relevant conditions, and the work activities they undertake at the workstation. The assessor will observe the user's working posture and if possible make changes to the workstation set up to improve their working posture during the appointment. The assessor will take relevant measurements and photographs of the end user and the workstation. No physical examination will be undertaken.



Following the assessment, a report will be provided focusing on the reason given for the assessment. The report will include a description of the workstation, the user's working posture, areas where set up could be improved, changes made during the appointment and any further recommendations (where relevant) with justifications.

## DSE Compliant Workstation Assessment £125



Following the assessment, a completed DSE assessment form highlighting any areas of concern and providing recommendations will be submitted.

A quote for any equipment which may be of benefit will be submitted with the report.

**Booking for multiple staff members?**

Get in touch so we can help.



023 8063 8641  
sales@deosgroup.co.uk

